

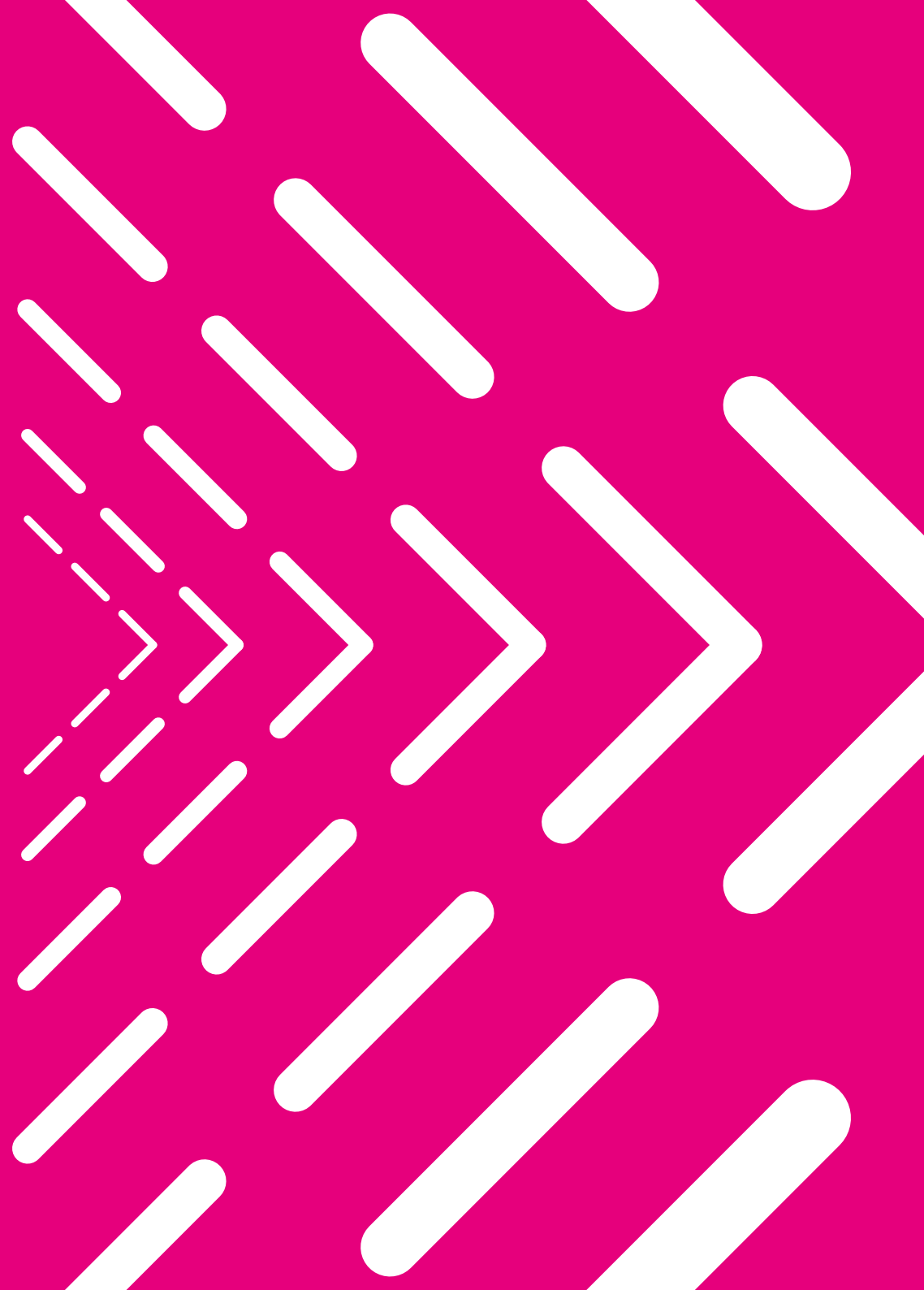
# Engage 2021

Shaping Ideas  
for Change

SESSION  
LINKS



National  
Co-ordinating  
Centre for  
Public Engagement



## Day 1 – Wednesday 1st December

**09:00 – 10:45**

### Plenary 1

Full details page 13

### Ideas for Change: Navigating Inclusive Practice

*Louise Archer, University College London & Fay Scott, National Institute for Health Research, Jude Fransman*

[Click here to join](#)

**11:00 – 12:00 Workshops**

Please choose from the following online sessions

Knowledge Exchange – Perception and Recognition

[Click here to join](#)

Beyond Hero Stories

[Click here to join](#)

Who are we choosing to exclude?

[Click here to join](#)

Building a toolkit for library and university partnerships

[Click here to join](#)

Developing leaders in outreach and public engagement

[Click here to join](#)

Putting the Engagement in Civic Engagement

[Click here to join](#)

**12.00 – 13:00 Networking** [Click here to join](#)

**13.00 – 14:00 Lunch Break**

**14:00 – 15:15**

### Plenary 2

Full details page 14

### Lessons in leadership

*Speakers include: Ruth Gill, National Museums Scotland; Dom Galliano, University College London; Paul Gough, Arts University Bournemouth; Esmee Ward, Manchester Museum* [Click here to join](#)

**15:30 – 16:15 Mini workshops** Please choose from the following online sessions

Multiverse Lab: Understanding the health priorities of people in a digital and physical world

[Click here to join](#)

How can the art production system feel and care? FACT's Learning team Duty of Care

[Click here to join](#)

Working in partnership with the people affected by our research- what are the benefits, learnings, and impacts?

[Click here to join](#)

The value of celebrating and rewarding PPIE: in-person to digital

[Click here to join](#)

Inclusion – developing our collective practice

[Click here to join](#)

The Academy Zone: Reflective Online Science Communication Training

[Click here to join](#)

A recipe for collaboration? Experiments in online engagement and what we have learnt

[Click here to join](#)

GlobalSCAPE: SciComm lessons from across the globe

[Click here to join](#)

**16:30 – 17:00 Engage highlights** [Click here to view](#)

## Day 2 – Thursday 2nd December

### 09:15 – 10:15 Workshops Please choose from the following online sessions

<p>Challenging our Power and Privilege <a href="#">Click here to join</a></p>	<p>Valuing community engagement: exploring the topic of payment and reward <a href="#">Click here to join</a></p>	<p>A review of Public and Community Engagement in the KEF <a href="#">Click here to join</a></p>	<p>A new resource to support the safe, effective and rewarding inclusion of children and young people in applied research and innovation <a href="#">Click here to join</a></p>	<p>Creating a shared vision for public engagement <a href="#">Click here to join</a></p>	<p>Reimagining the Ethics of Engagement <a href="#">Click here to join</a></p>
---	---	--	---	--	--

**10.30 – 11:15**  
**Networking**  
[Click here to join](#)

**11:45 – 13:00**  
**Plenary 3**  
Full details page 21

### Creating Living Knowledge

Speakers include: Helen Goulden, Young Foundation; Rusi Jaspal, University of Brighton; Kate Pahl, Manchester Metropolitan University [Click here to join](#)

**13.00 – 14:00**  
**Lunch Break**

### 14:00 – 14:45 Mini workshops Please choose from the following online sessions

<p>Tailoring online activities to improve inclusivity, engagement, and community connections <a href="#">Click here to join</a></p>	<p>Finding the Power in Empowerment <a href="#">Click here to join</a></p>	<p>Letterbox Science <a href="#">Click here to join</a></p>	<p>Undergraduate Teaching: Exploring Engagement Pedagogy and Practice <a href="#">Click here to join</a></p>	<p>The Photonshop: A case study in improving outreach and public engagement events for Autistic people <a href="#">Click here to join</a></p>	<p>Get talking online <a href="#">Click here to join</a></p>	<p>Engaging with underrepresented groups in Wales <a href="#">Click here to join</a></p>
---	--	---	--	---	--	--

**15:00 – 16:30**  
**Plenary 4**  
Full details page 24

### Setting an agenda for action

Speakers include: Karen Salt, Deputy Director for R&D Culture and Environment  
[Click here to join](#)

**16:45 – 17:15 Engage highlights** [Click here to view](#)



The National Co-ordinating Centre for Public Engagement (NCCPE) is internationally recognised for its work supporting and inspiring universities to engage with the public. We work to change perspectives, promote innovation, and nurture and celebrate excellence. We also champion meaningful engagement that makes a real and valued difference to people's lives.

The NCCPE is supported by UK Research and Innovation, the devolved Higher Education funding bodies, and Wellcome, and has been hosted by the University of Bristol and UWE Bristol since it was established in 2008.

---

**National Co-ordinating Centre  
for Public Engagement**

2nd Floor, Arnolfini  
16 Narrow Quay Bristol BS1 4QA

Tel 0117 328 7190

Email [nccpe.enquiries@uwe.ac.uk](mailto:nccpe.enquiries@uwe.ac.uk)

Twitter @NCCPE

[www.publicengagement.ac.uk](http://www.publicengagement.ac.uk)

